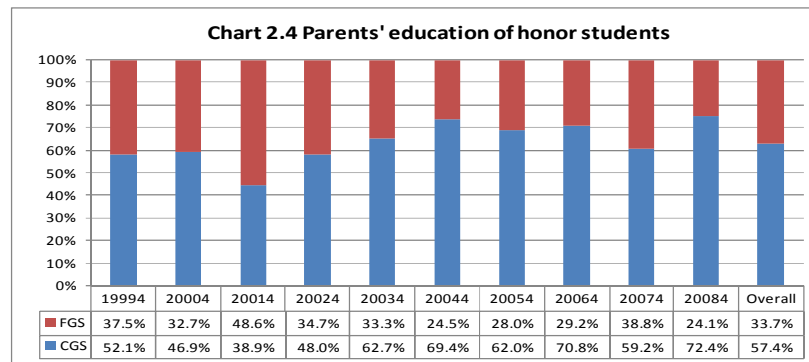
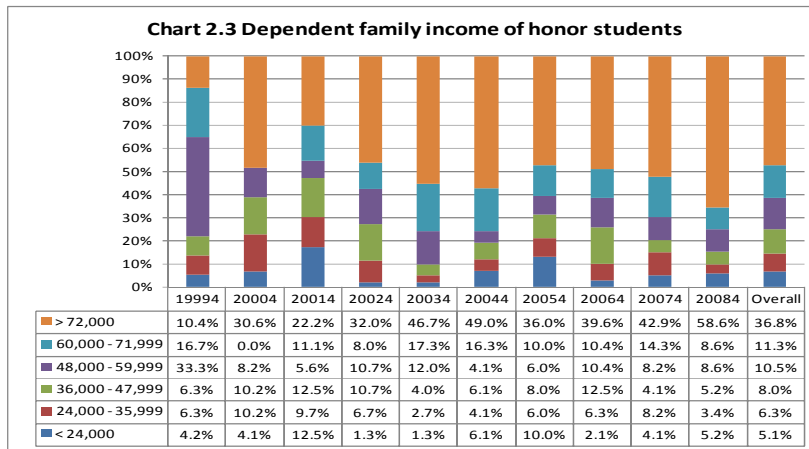
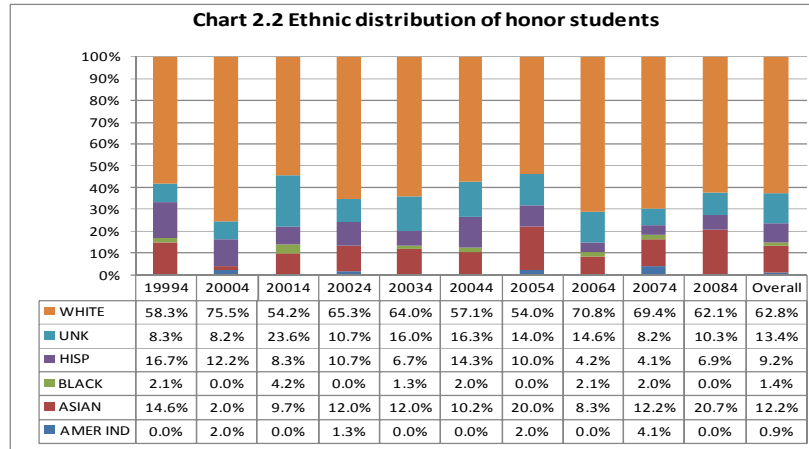
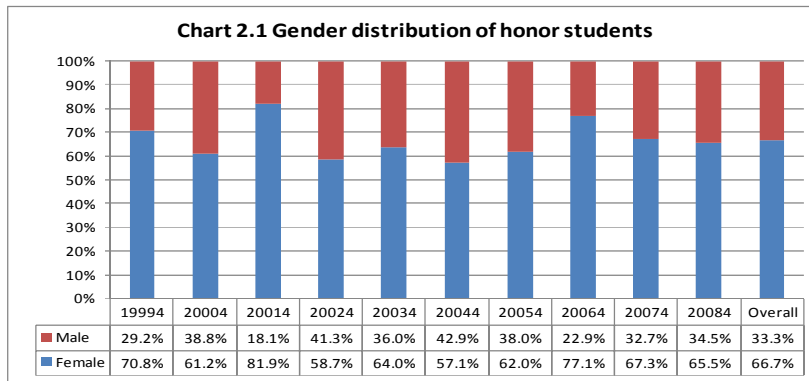
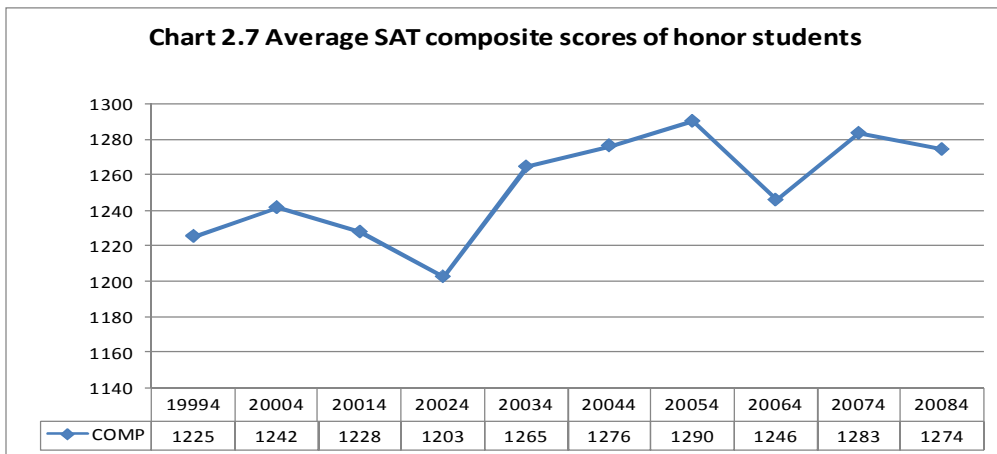
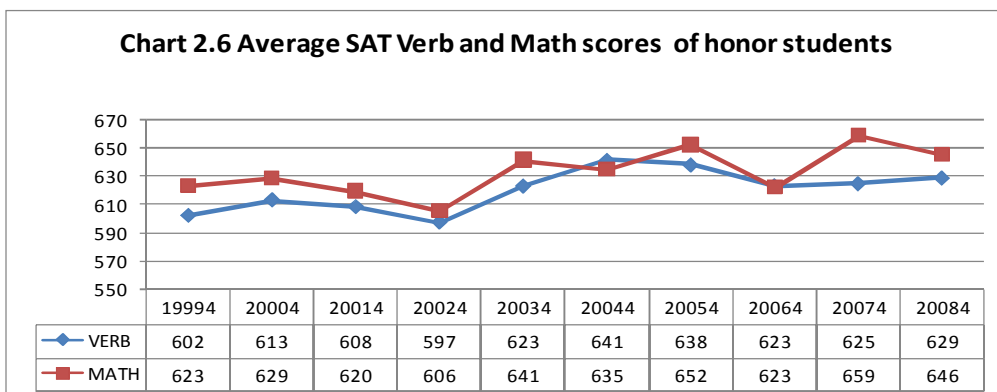
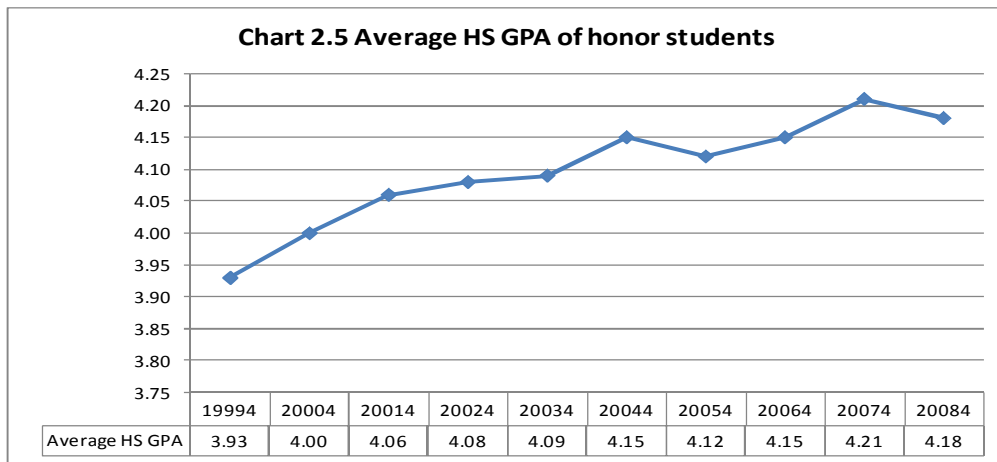


Appendix - Summary Report of Honors Program Assessment



Note: Students with unknown parents' education are excluded in Chart 2.4.

Appendix - Summary Report of Honors Program Assessment



Appendix - Summary Report of Honors Program Assessment

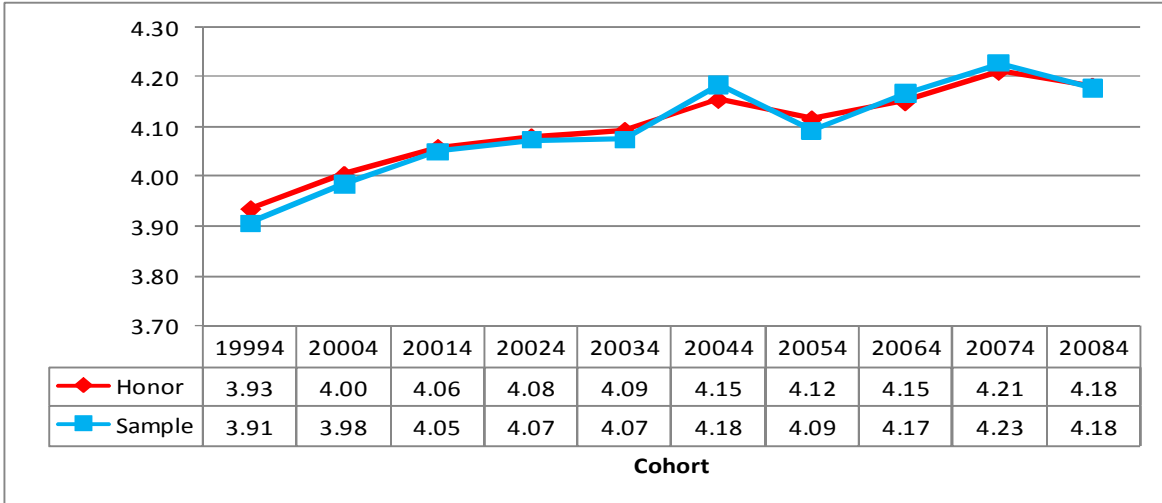
Table 2.1 Colleges distribution of honor students

	19994	20004	20014	20024	20034	20044	20054	20064	20074	20084	Grand Total
CAH											
N	4	9	11	15	11	12	5	3	7	12	89
%	8.3%	18.4%	15.3%	20.0%	14.7%	24.5%	10.0%	6.3%	14.3%	20.7%	15.5%
CAST											
N	2	7	2	2	3	2	7	3		6	34
%	4.2%	14.3%	2.8%	2.7%	4.0%	4.1%	14.0%	6.3%	0.0%	10.3%	5.9%
CHHS											
N		1	2	7	6	4	4	6	2	6	38
%	0.0%	2.0%	2.8%	9.3%	8.0%	8.2%	8.0%	12.5%	4.1%	10.3%	6.6%
COE											
N	7	7	3	7	6	8	6	5	8	4	61
%	14.6%	14.3%	4.2%	9.3%	8.0%	16.3%	12.0%	10.4%	16.3%	6.9%	10.6%
COSS											
N	3	6	1	7	5	3		5	1	6	37
%	6.3%	12.2%	1.4%	9.3%	6.7%	6.1%	0.0%	10.4%	2.0%	10.3%	6.5%
CSB											
N	9	5	18	9	13	6	6	4	2	5	77
%	18.8%	10.2%	25.0%	12.0%	17.3%	12.2%	12.0%	8.3%	4.1%	8.6%	13.4%
CSM											
N	13	5	15	9	22	9	11	13	22	16	135
%	27.1%	10.2%	20.8%	12.0%	29.3%	18.4%	22.0%	27.1%	44.9%	27.6%	23.6%
KSOEHD											
N	4	5	8	12		1	1	2	1		34
%	8.3%	10.2%	11.1%	16.0%	0.0%	2.0%	2.0%	4.2%	2.0%	0.0%	5.9%
SPE											
N	6	4	12	7	9	4	10	7	6	3	68
%	12.5%	8.2%	16.7%	9.3%	12.0%	8.2%	20.0%	14.6%	12.2%	5.2%	11.9%
Total N	48	49	72	75	75	49	50	48	49	58	573

Table 3.1 Sampling schema

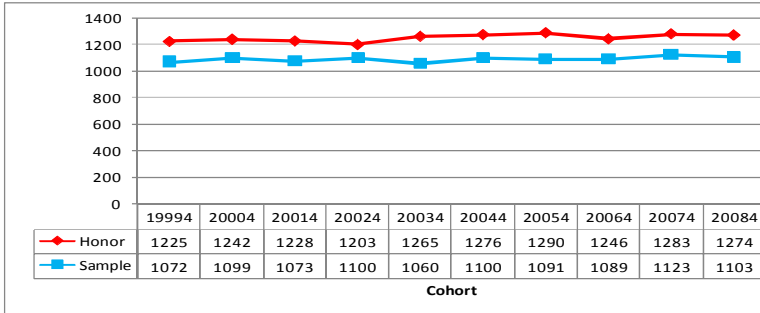
	19994	20004	20014	20024	20034	20044	20054	20064	20074	20084	Total
Honor students	48	49	72	75	75	49	50	48	49	58	573
Non-Honor students	1694	1892	1933	2237	2541	2280	2397	2564	2595	2765	22898
25th percentile of HS GPA for honor students											
	3.97	3.95	3.95	4.00	3.95	4.03	4.00	4.02	4.13	4.11	
Sampling pool (Non-honor students with HS GPA >= 25th percentile of HS GPA for honor students)											
	75	107	150	115	164	105	144	142	81	91	1174
Sampled students (students randomly selected from the sampling pool for each cohort)											
	50	50	80	80	80	50	50	50	50	60	600

Chart 3.1 HS GPA between honor and sample students



Appendix - Summary Report of Honors Program Assessment

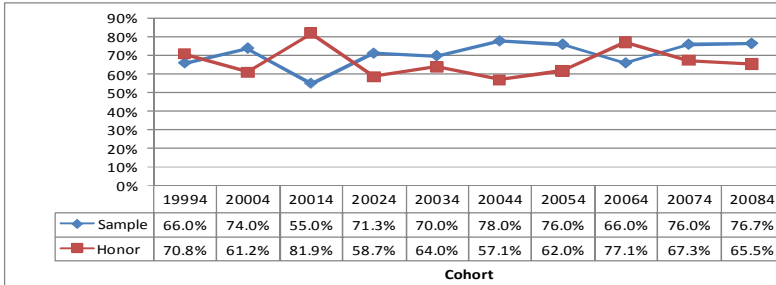
Chart 3.2 SAT Composite Scores



Findings

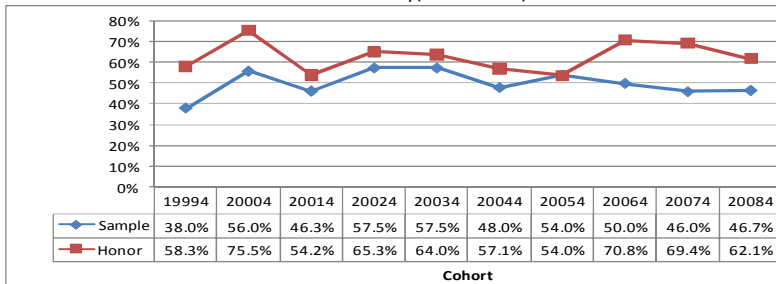
Honor students higher SAT Comp scores over years. But the differences are very stable over years. The pattern is also true for SAT_Verb and SAT_Math.

Chart 3.3 Gender (% of female)



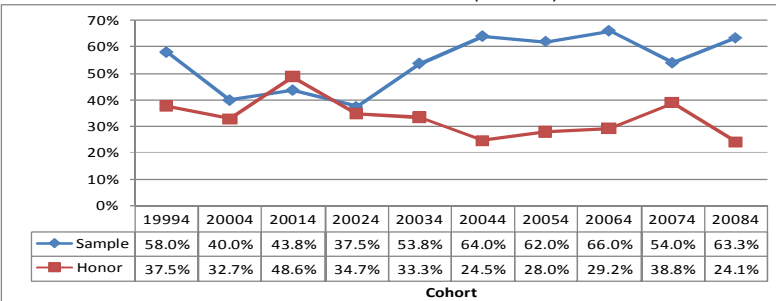
Exists the differences in gender. However, the major students are female for both groups

Chart 3.4 Ethnicity(% of Whites)



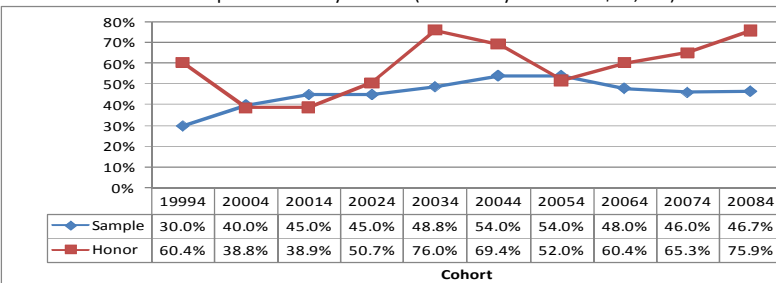
Honor students have more Whites over years.

Chart 3.5 Parents' education (% of FGS)



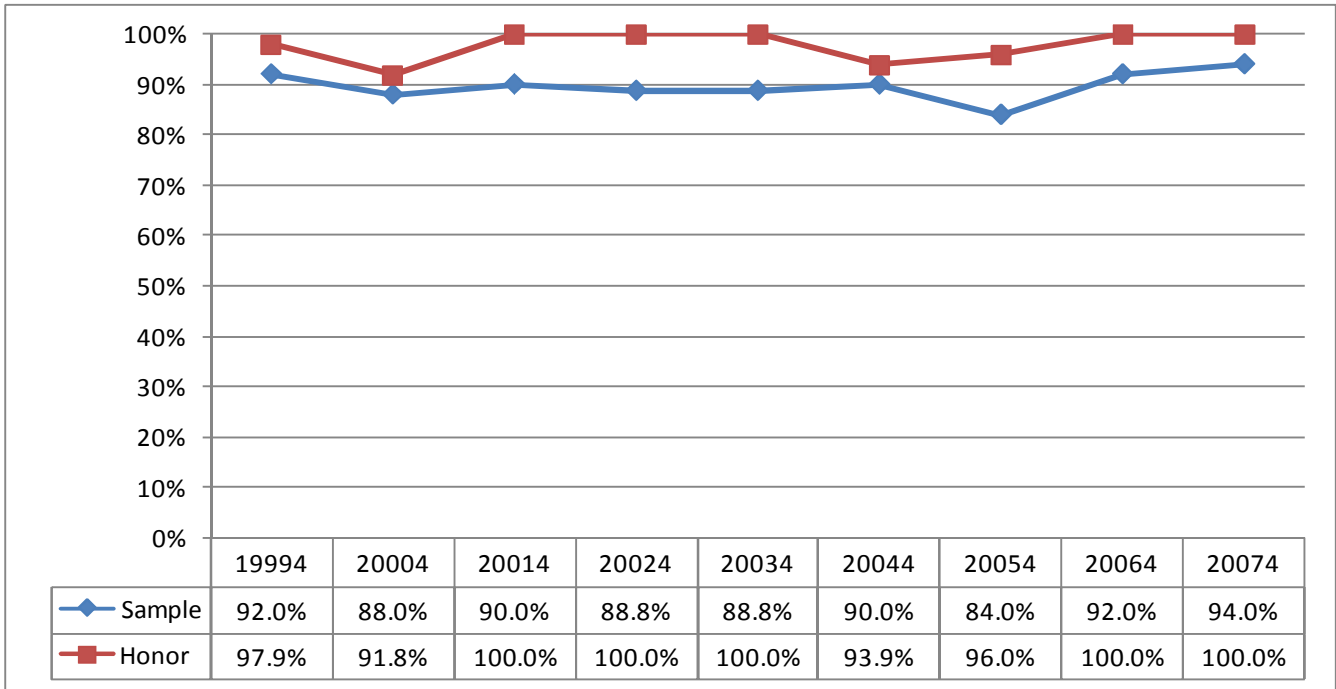
Honor students have lower percentages of FGS for most cohorts.

Chart 3.6 Dependent family income (% of family income >=\$48,000)



Honor students have higher family income in most cohorts.

Chart 4.1 Retention rates



Findings

Honor students constantly have higher retention rates than sample students over years.

Appendix - Summary Report of Honors Program Assessment

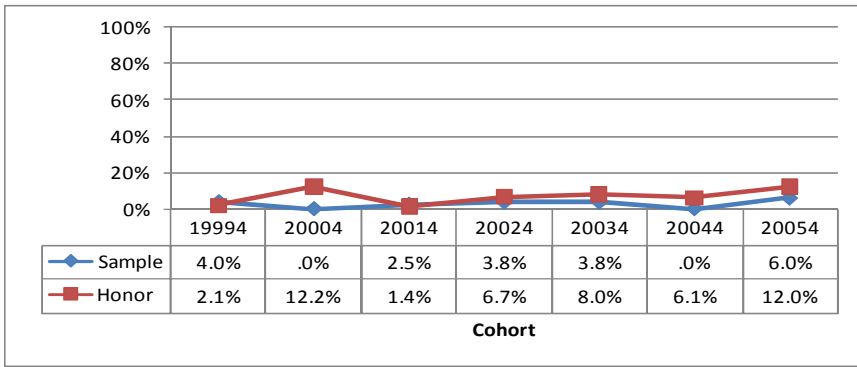


Chart 5.2 4-Year graduation rates

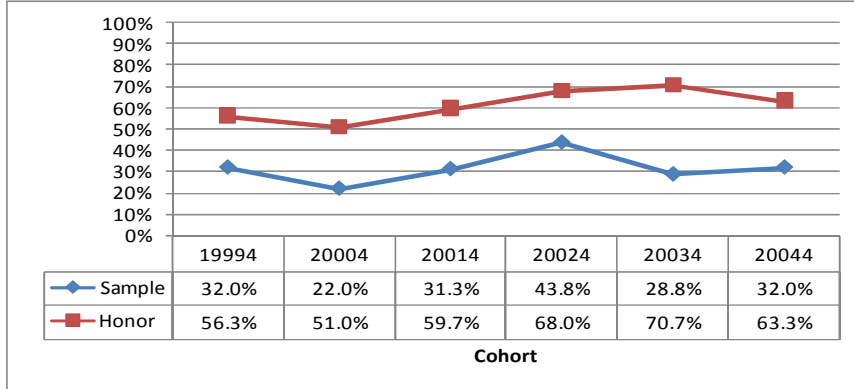


Chart 5.3 5-Year graduation rates

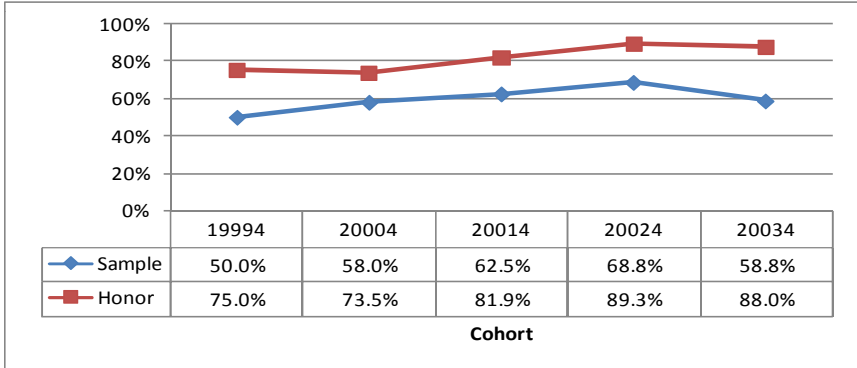
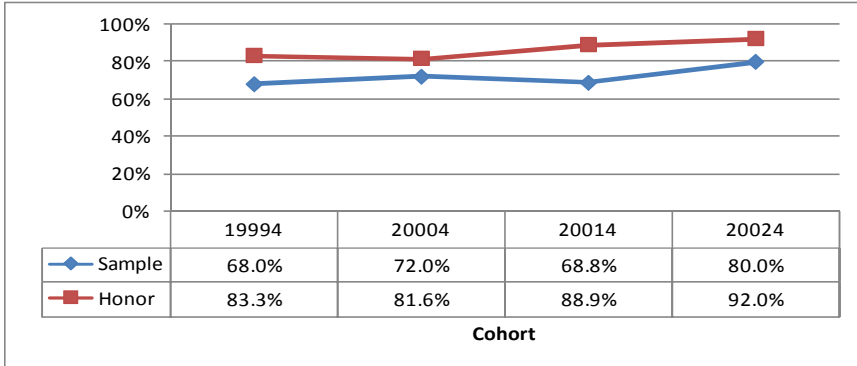
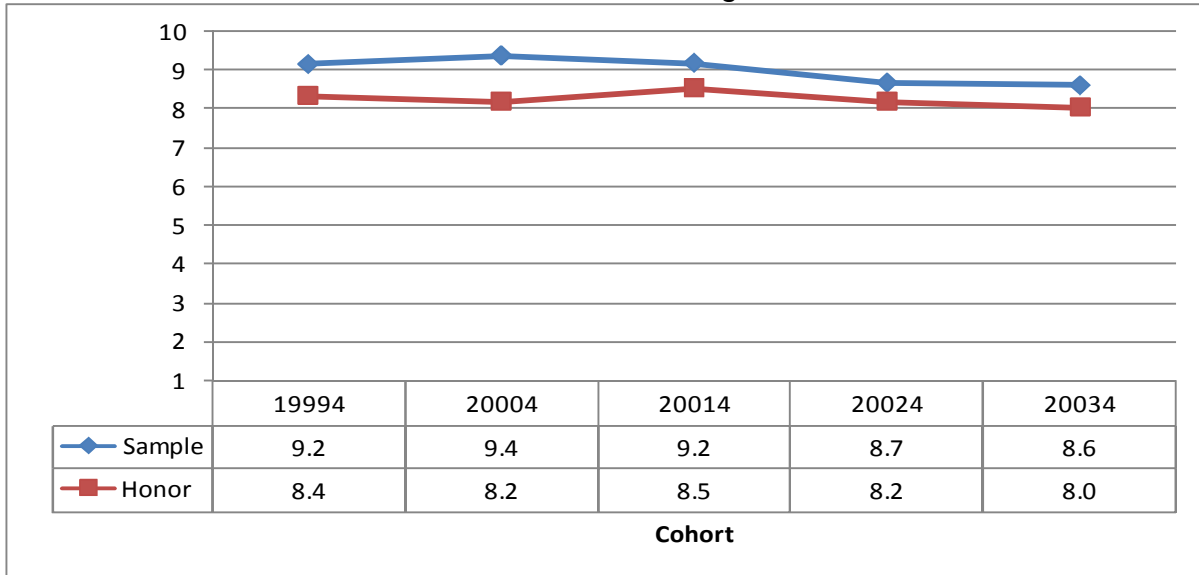


Chart 5.4 6-Year graduation rates



For both groups of students, only a few students graduated in 3 years. However, honor students have much higher 4-year and five-year graduation rates than sample students.

Chart 5.5 Time to degree*

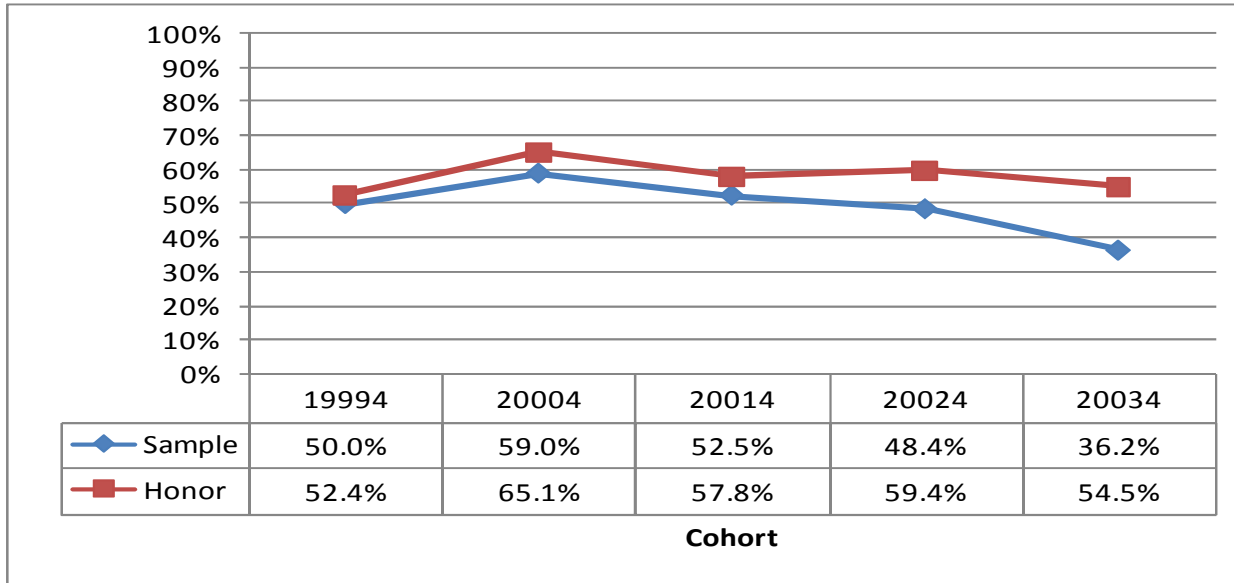


* Time to degree refers to the number of terms enrolled between the entry term and graduation term. The summer session is counted as 0.5 and the fall/spring term is counted as 1. The table only includes the data for the first five cohorts.

Findings

Honor students constantly have shorter time (about one Fall or Spring terms) to receive their bachelor's degrees than sample students.

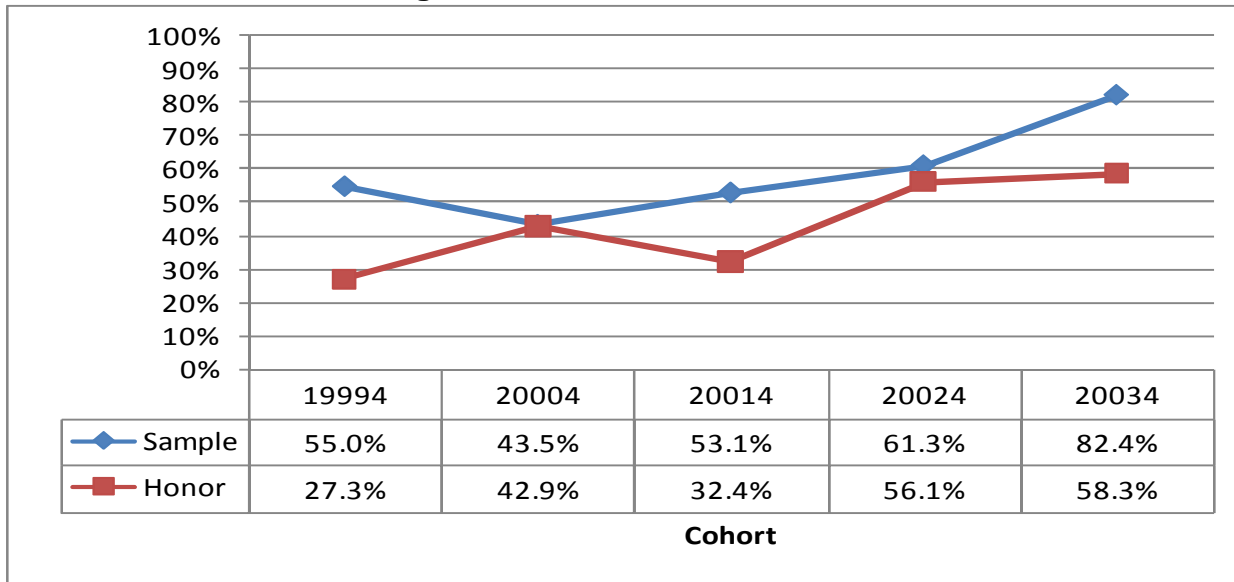
Chart 6.1 Percentages of students pursuing CE



Findings

Honor students have constantly higher percentages of pursuing continuing education than sample students over years.

Chart 6.2 Percentages of students enrolled in Fresno State for CE



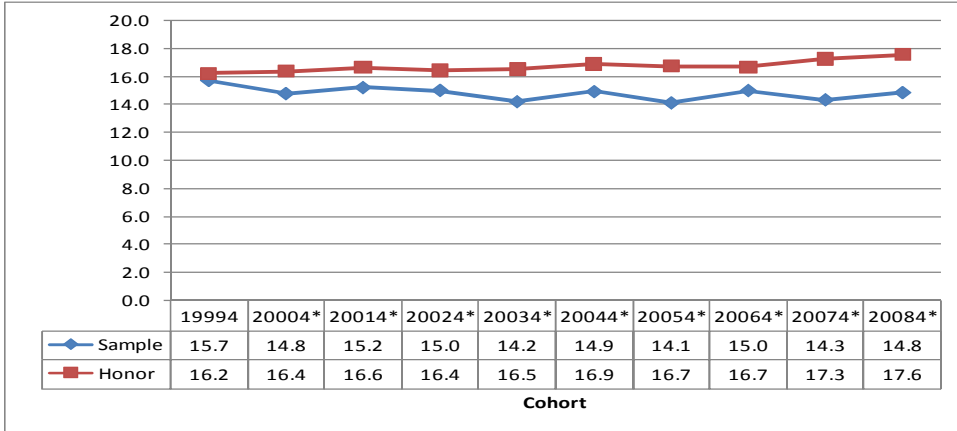
Honor students have constantly lower percentages of continuously enrolling in Fresno State than sample students. More honor students transferred into UC or other research universities than sample students (See Table 6.3).

Appendix - Summary Report of Honors Program Assessment

Table 6.1 CE Institutions

CE Institution Names	Sample		Honor	
	N	%	N	%
CALIFORNIA STATE UNIVERSITY - FRESNO	71	57.7%	74	45.1%
FRESNO CITY COLLEGE	5	4.1%	11	6.7%
REEDLEY COLLEGE	4	3.3%	3	1.8%
FRESNO PACIFIC UNIVERSITY	2	1.6%	3	1.8%
NATIONAL UNIVERSITY	3	2.4%	2	1.2%
CALIFORNIA STATE UNIVERSITY - SACRAMENTO		0.0%	4	2.4%
ARIZONA STATE UNIVERSITY	1	0.8%	2	1.2%
CALIFORNIA STATE UNIVERSITY - EAST BAY	2	1.6%	1	0.6%
LOMA LINDA UNIVERSITY	2	1.6%	1	0.6%
SAN DIEGO STATE UNIVERSITY		0.0%	3	1.8%
UNIVERSITY OF SOUTHERN CALIFORNIA	2	1.6%	1	0.6%
CHAPMAN UNIVERSITY-AC 1	2	1.6%	1	0.6%
CALIFORNIA STATE UNIVERSITY - BAKERSFIELD	2	1.6%	1	0.6%
UNIVERSITY OF THE PACIFIC MCGEORGE SCHOOL OF LAW	1	0.8%	2	1.2%
UNIVERSITY OF CALIFORNIA-DAVIS		0.0%	2	1.2%
UNIVERSITY OF PHOENIX	1	0.8%	1	0.6%
UNIVERSITY OF CALIFORNIA-LOS ANGELES		0.0%	2	1.2%
CORNELL UNIVERSITY-GRADS/JGSM/LAW/VET		0.0%	2	1.2%
SAN JOSE STATE UNIVERSITY	1	0.8%	1	0.6%
CALIFORNIA STATE UNIVERSITY - DOMINGUEZ HILLS	2	1.6%		0.0%
UNIVERSITY OF CALIFORNIA-IRVINE		0.0%	2	1.2%
PRINCETON THEOLOGICAL SEMINARY	1	0.8%	1	0.6%
UNIVERSITY OF CALIFORNIA-SAN DIEGO	1	0.8%	1	0.6%
UNIVERSITY OF THE PACIFIC-PHARMACY		0.0%	2	1.2%
BOSTON UNIVERSITY		0.0%	2	1.2%
COLLEGE OF THE SEQUOIAS	1	0.8%	1	0.6%
UNIVERSITY OF CALIFORNIA-DAVIS 80		0.0%	1	0.6%
STANFORD UNIVERSITY		0.0%	1	0.6%
UNIVERSITY OF HAWAII AT MANOA		0.0%	1	0.6%
MULTNOMAH BIBLE COLLEGE AND BIBLICAL SEMINARY	1	0.8%		0.0%
UNIVERSITY OF CALIFORNIA - RIVERSIDE	1	0.8%		0.0%
CALIFORNIA STATE UNIVERSITY - FULLERTON		0.0%	1	0.6%
UNIVERSITY OF CALIFORNIA-SANTA BARBARA		0.0%	1	0.6%
NEW YORK UNIVERSITY		0.0%	1	0.6%
JOHNSON & WALES UNIVERSITY		0.0%	1	0.6%
NORTHWESTERN UNIVERSITY		0.0%	1	0.6%
UNIVERSITY OF ALABAMA		0.0%	1	0.6%
ORANGE COAST COLLEGE		0.0%	1	0.6%
UNIVERSITY OF CALIFORNIA-BERKELEY		0.0%	1	0.6%
PENNSYLVANIA STATE UNIVERSITY		0.0%	1	0.6%
HARTNELL COMMUNITY COLLEGE		0.0%	1	0.6%
PEPPERDINE UNIVERSITY		0.0%	1	0.6%
UNIVERSITY OF COLORADO AT DENVER HEALTH SCIENCES		0.0%	1	0.6%
POINT LOMA NAZARENE UNIVERSITY		0.0%	1	0.6%
UNIVERSITY OF MINNESOTA-TWIN CITIES	1	0.8%		0.0%
DIABLO VALLEY COLLEGE		0.0%	1	0.6%
UNIVERSITY OF PORTLAND	1	0.8%		0.0%
PRINCETON UNIVERSITY		0.0%	1	0.6%
TEXAS SOUTHERN UNIVERSITY	1	0.8%		0.0%
CHAPMAN UNIVERSITY-LAW		0.0%	1	0.6%
UNIVERSITY OF CALIFORNIA - HASTINGS COLLEGE OF LAW		0.0%	1	0.6%
DREXEL UNIVERSITY - HEALTH SCIENCES	1	0.8%		0.0%
UNIVERSITY OF CALIFORNIA - SAN DIEGO	1	0.8%		0.0%
DUQUESNE UNIVERSITY	1	0.8%		0.0%
CYPRESS COLLEGE		0.0%	1	0.6%
YUBA COMMUNITY COLLEGE		0.0%	1	0.6%
FRESNO PACIFIC UNIVERSITY - DEGREE COMPLETION	1	0.8%		0.0%
SAN DIEGO MIRAMAR COLLEGE	1	0.8%		0.0%
IRVINE VALLEY COLLEGE		0.0%	1	0.6%
COLORADO STATE UNIVERSITY - PUEBLO	1	0.8%		0.0%
UNIVERSITY OF CENTRAL OKLAHOMA		0.0%	1	0.6%
SAN FRANCISCO STATE UNIVERSITY		0.0%	1	0.6%
UNIVERSITY OF CONNECTICUT		0.0%	1	0.6%
BIOLA UNIVERSITY		0.0%	1	0.6%
UNIVERSITY OF ILLINOIS @ URBANA		0.0%	1	0.6%
SANTA ANA COLLEGE		0.0%	1	0.6%
UNIVERSITY OF NEVADA-RENO		0.0%	1	0.6%
SANTA CLARA UNIVERSITY		0.0%	1	0.6%
UNIVERSITY OF PITTSBURGH	1	0.8%		0.0%
SIERRA COLLEGE		0.0%	1	0.6%
CALIFORNIA STATE UNIVERSITY - STANISLAUS	1	0.8%		0.0%
SIMMONS COLLEGE - GRADS	1	0.8%		0.0%
WASHINGTON STATE UNIVERSITY	1	0.8%		0.0%
WALLA WALLA UNIVERSITY	1	0.8%		0.0%
WEST HILLS COLLEGE, LEMOORE		0.0%	1	0.6%
WHITTIER COLLEGE - LAW SCHOOL	1	0.8%		0.0%
WESTERN GOVERNORS UNIVERSITY		0.0%	1	0.6%
ROSALIND FRANKLIN UNIV OF MED & SCIENCE - HEALTH		0.0%	1	0.6%
YALE UNIVERSITY		0.0%	1	0.6%
SACRAMENTO CITY COLLEGE-LOS RIOS CC DISTRICT		0.0%	1	0.6%
ACADEMY OF ART UNIVERSITY		0.0%	1	0.6%
SAMUEL MERRITT COLLEGE	1	0.8%		0.0%
Grand Total	123	100.0%	164	100.0%

Chart 7.1 First term units

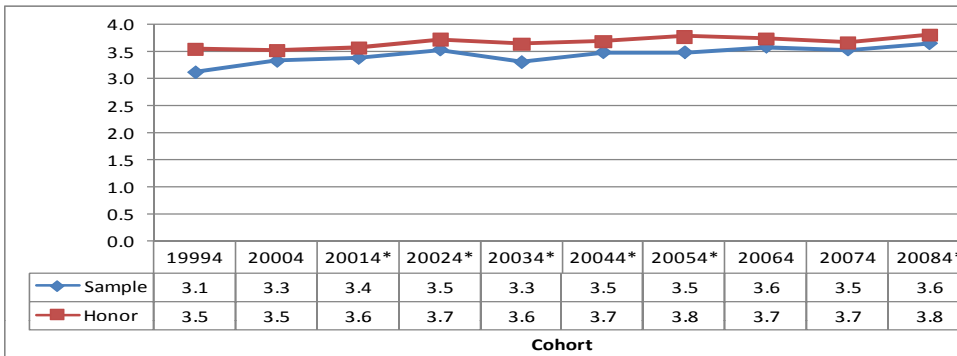


Findings

Honor students constantly took more units in the first term than sample students.

Note: * means significant differences at the significant level of 0.05 based on independent t-tests.

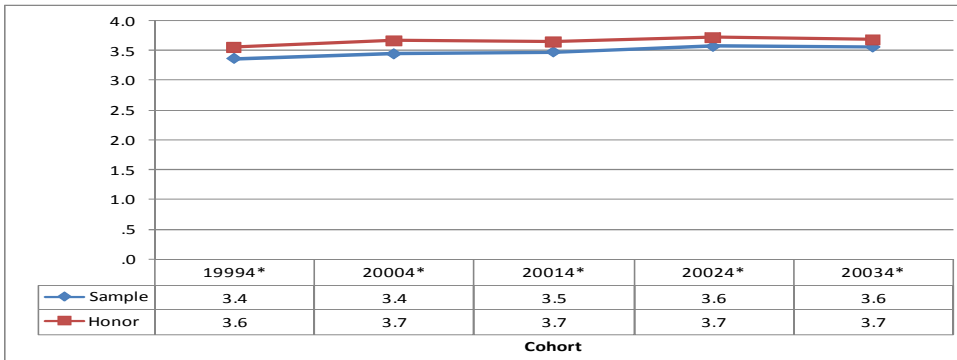
Chart 7.2 First term GPA



Honor students have higher first-term GPA than sample students over years. The overall difference is about 0.2.

Note: * means significant differences at the significant level of 0.05 based on independent t-tests.

Chart 7.3 Graduation GPA



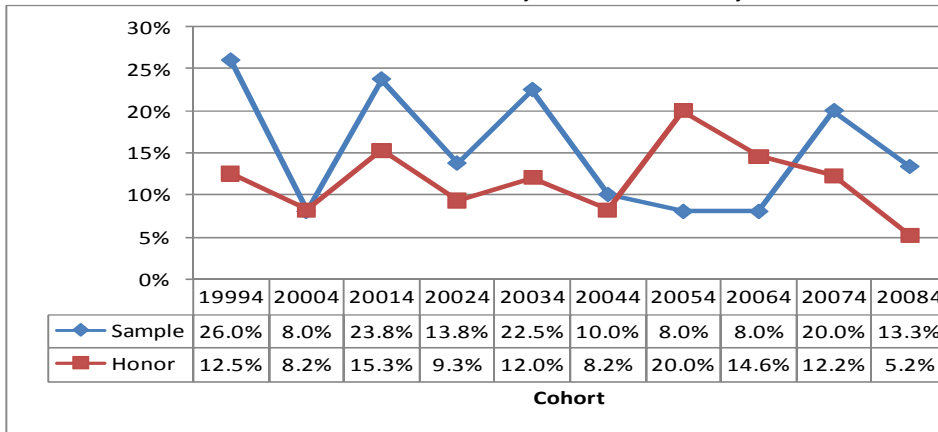
Findings

Honor students constantly have higher GPA than sample students.

Note: * means significant differences at the significant level of 0.05 based on independent t-tests. Graduation GPA refers to the cumulative GPA at graduation.

Appendix - Summary Report of Honors Program Assessment

Chart 8.1 Undeclared major students at entry

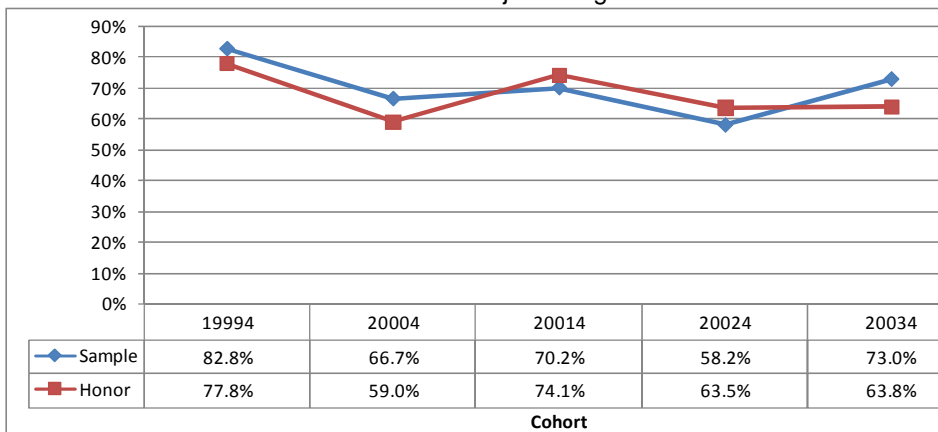


Findings

At entry, honor students have lower percentage of undeclared major students than sample students except for students in fall 2005 and 2006 cohorts.

Note: the table above is based on all of 1173 students.

Chart 8.2 Major change*

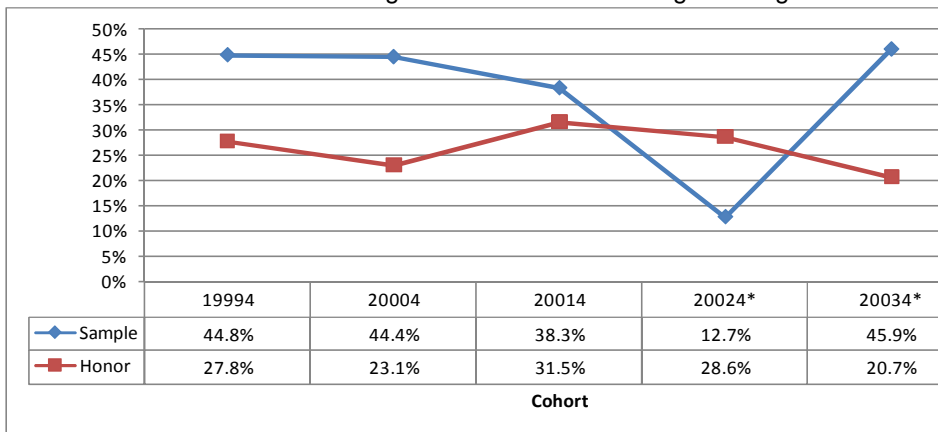


Findings

There is no significant differences in percentages of students who changed their majors (academic plans) between honor students and sample students. For both groups of students, the percentages of changing majors are high and stable over cohorts.

* Excludes all of 163 students who didn't declare their major at entry. The majors are identified in terms of students' academic plans.

Chart 8.3 Percentages of students who changed colleges

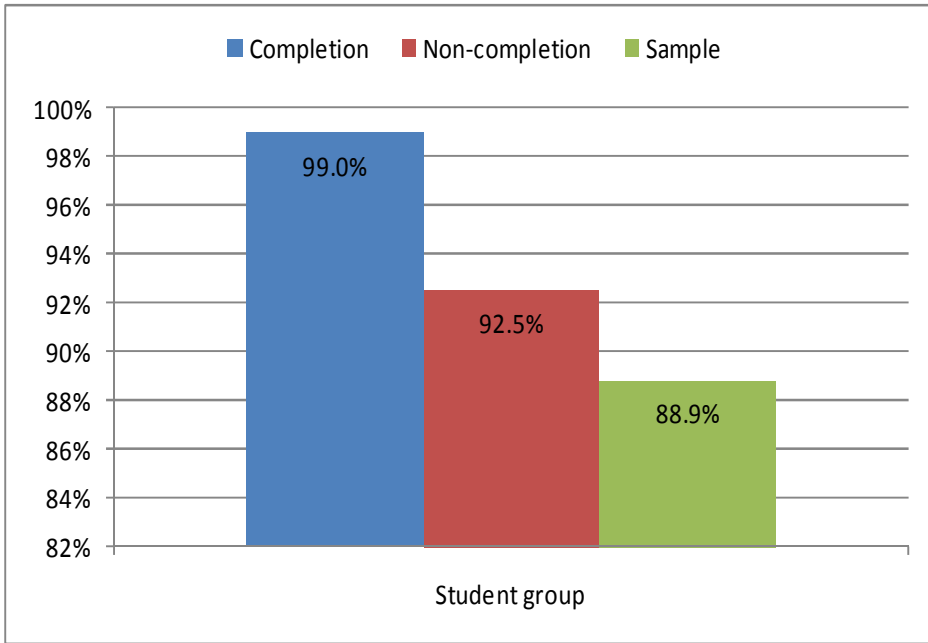


Findings

Overall speaking, there are no significant differences in percentages of students who changed their colleges. However, honor students' percentages of changing colleges are less various than those of sample students.

Note: * means significant difference at the significant level of 0.05 based on the chi-square tests.

Chart 9.1 Retention

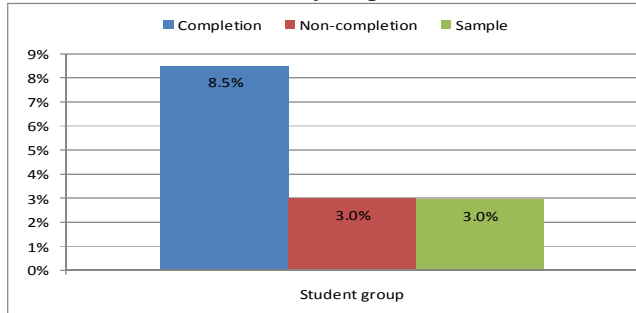


Findings

Overall speaking, non-completion honor students have lower retention rate than completion honor students but still have higher retention rates than sampled non-honor students.

Appendix - Summary Report of Honors Program Assessment

Chart 9.2 3-year graduation

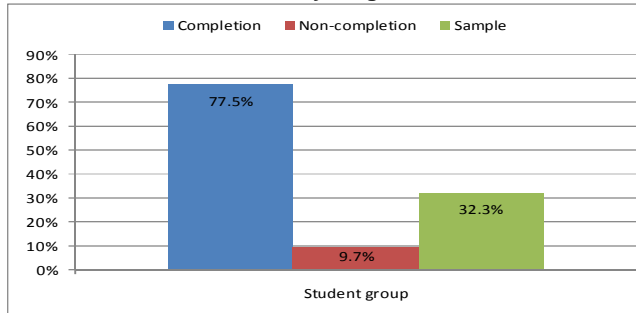


Findings

Overall speaking, non-completion honor students have lower 3-year graduation rate than completion honor students but have same rate as for sampled non-honor students.

Note: Includes students in cohorts from fall 1999 to fall 2005.

Chart 9.3 4-year graduation

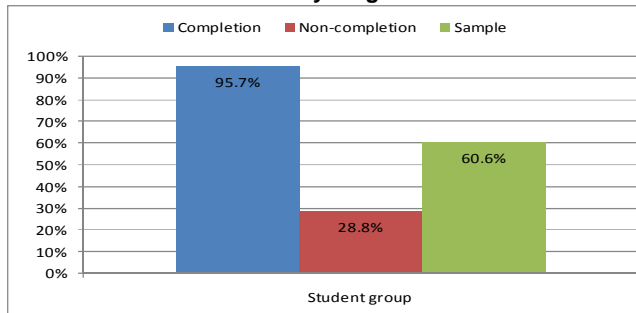


Findings

Overall speaking, non-completion honor students have much lower 4-year graduation rate than completion honor students and sampled non-honor students.

Note: Includes students in cohorts from fall 1999 to fall 2004.

Chart 9.4 5-year graduation

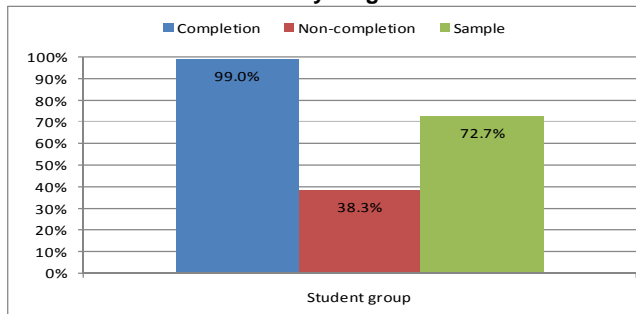


Findings

Overall speaking, non-completion honor students have much lower 5-year graduation rate than completion honor students and sampled non-honor students.

Note: Includes students in cohorts from fall 1999 to fall 2003.

Chart 9.5 6-year graduation

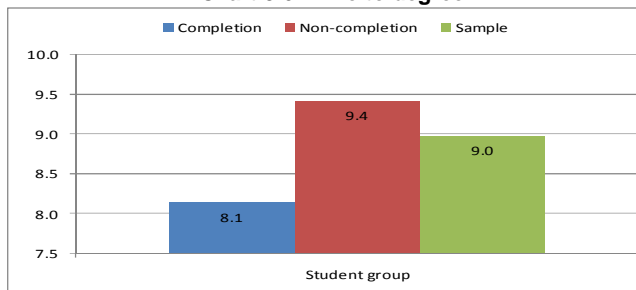


Findings

Overall speaking, non-completion honor students have much lower 6-year graduation rate than completion honor students and sampled non-honor students.

Note: Includes students in cohorts from fall 1999 to fall 2002.

Chart 9.6 Time to degree

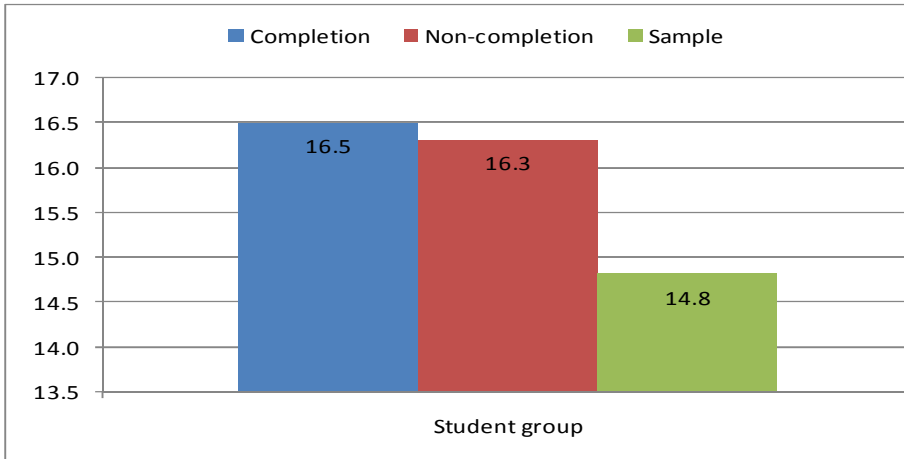


Findings

Overall speaking, non-completion honor students spent longer time to get bachelor's degree than completion honor students and sampled non-honor students. But completion honor student spent shorter time to receive the bachelor's degree.

Note: Includes students in cohorts from fall 1999 to fall 2003.

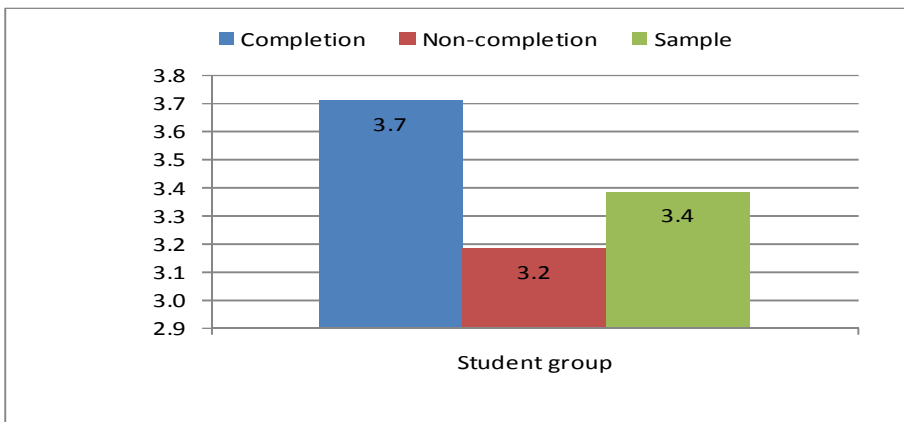
Chart 9.7 First term units



Findings

Overall speaking, non-completion honor students took similar units in the first term to completion honor students. Both groups of students took more unite than sampled non-honor students.

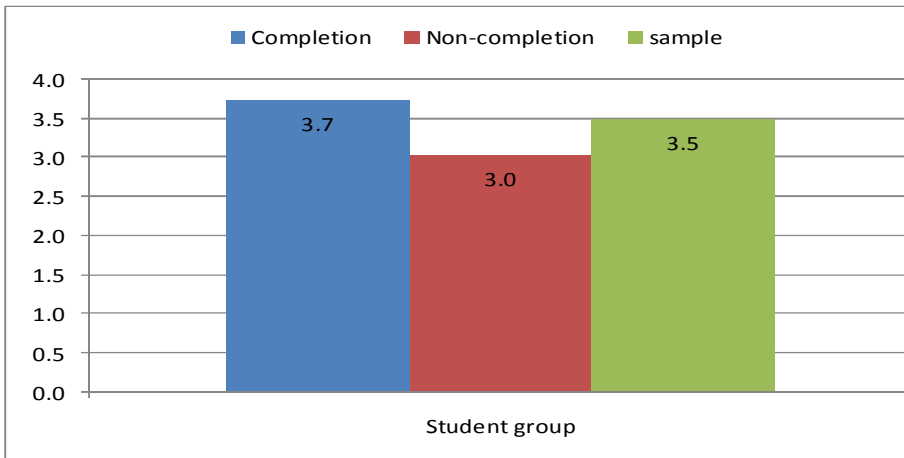
Chart 9.8 First term GPA



Findings

Overall speaking, non-completion honor students have the lowest first term GPA and completion honor students have the highest first term GPA.

Chart 9.9 Graduation GPA

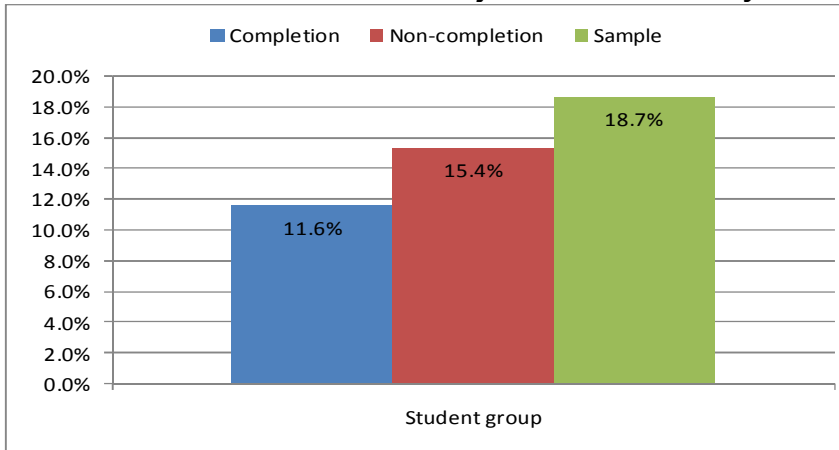


Findings

Overall speaking, non-completion honor students have the lowest cumulative GPA and completion honor students have the highest cumulative GPA at graduation.

Note: Includes only graduates in cohorts from fall 1999 to fall 2005.

Chart 9.10 Undeclared major students at entry

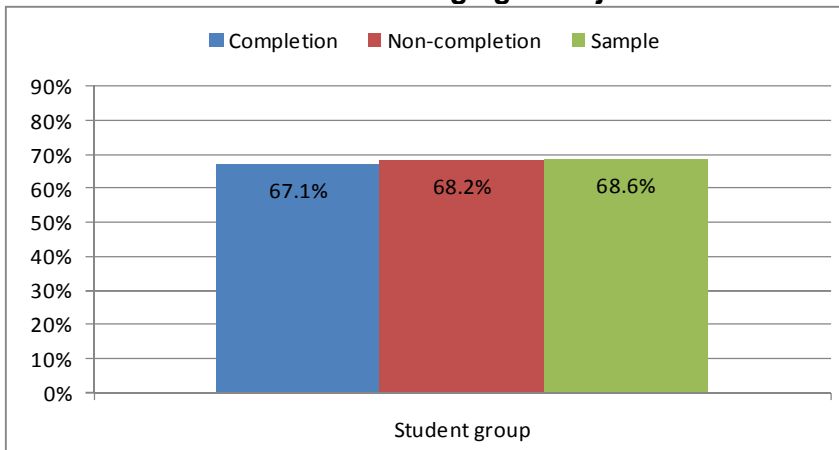


Findings

Overall speaking, completion honor students have the lowest percentage of undeclared major students and sample students have the highest percentages.

Note: includes students in cohorts from fall 1999 to fall 2003.

Chart 9.11 Changing in majors

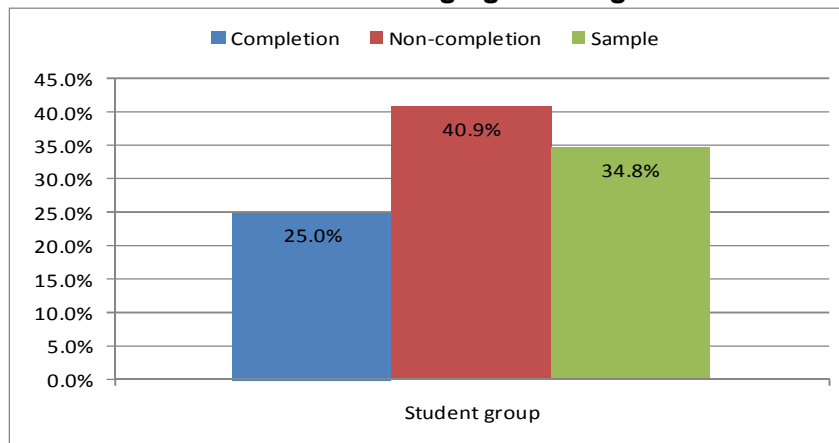


Findings

Overall speaking, there are no large differences in changing majors among three groups of students. All groups have high percentages of changing majors.

Note: includes graduates in cohorts from fall 1999 to 2003. Also undeclared major students are excluded.

Chart 9.12 Changing in colleges

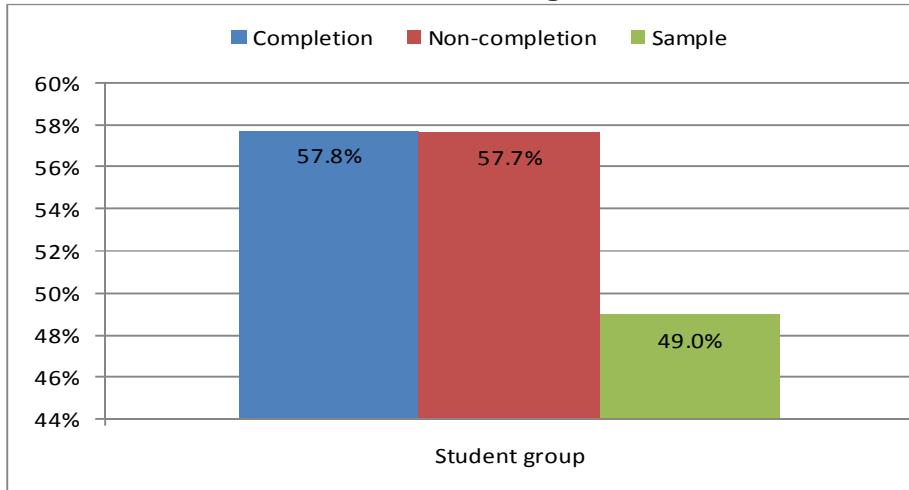


Findings

Overall speaking, non-completion honor students have the highest percentage of changing colleges and completion honor students have the lowest percentages.

Note: includes graduates in cohorts from fall 1999 to 2003. Also undeclared major students are excluded.

Chart 9.13 Continuing education



Findings

Overall speaking, completion and non-completion honor students have the similar percentage of students pursuing continuing education after graduation from Fresno State. Both group of honor students have higher percentages than sample students.

Note: includes graduates in cohorts from fall 1999 to 2003.